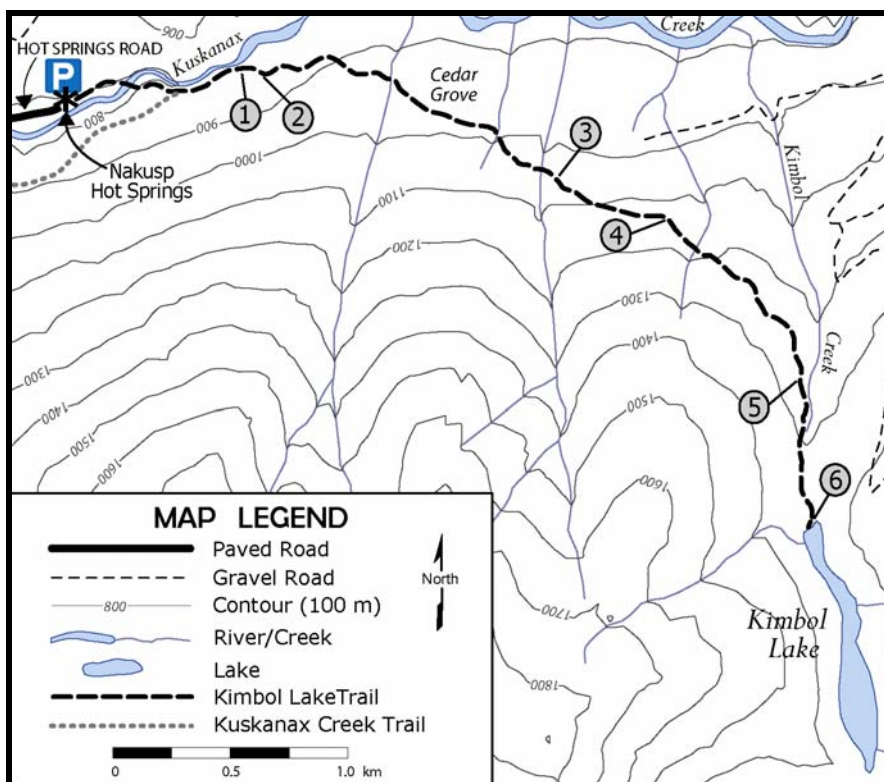


Kimbol Lake Trail

Rating: easy-moderate
Distance: 4 km one way
Time: 5 hour return trip
Surface: compact dirt
Modes: hiking

Point GPS Description

Point	GPS	Description
P	50° 17' 48" N 117° 41' 5" W	Nakusp Hot Springs
1	50° 17' 53" N 117° 40' 29" W	Original Hot Springs source
2	50° 17' 52" N 117° 40' 24" W	First cedar/hemlock grove
3	50° 17' 37" N 117° 39' 20" W	Trail crosses logging road
4	50° 17' 32" N 117° 38' 55" W	Trail begins to climb
5	50° 17' 9" N 117° 38' 28" W	Second cedar/hemlock grove
6	50° 16' 51" N 117° 38' 22" W	Kimbol Lake



Trail Description

The Kimbol Lake Trail provides a great low elevation hike in spring, summer or fall. The 4 kilometre trail winds through imposing cedar and hemlock forests along the southern slope of the Kuskanax Creek valley, at first, and then climbs into the narrower Kimbol Lake valley. The first leg of the journey follows the .8 km trail to the Hot Springs' source (GPS Point 1 on the map), the site of the original hot springs resort. Cement forms remain where once sat the pools to which tourist trekked by packhorse from the paddlewheelers docked in Nakusp. Poison ivy, uncharacteristic in the area, thrives on the open ground at the source.

In the far southeast corner of the clearing, a brown wooden sign marks the beginning of the Kimbol Lake Trail. Immediately the trail begins a steep climb, but levels out 50 metres later to amble through stately stands of cedar and hemlock, with a rich undergrowth of Devil's club, huckleberries and ferns (GPS Point 2). As the trail winds deeper up the Kuskanax River valley, the cedar/hemlock forest remains uniform, with abundant underbrush where logging or blow-down enables more sunlight to penetrate the canopy of trees.

The trail grade is slight at first, but, as the trail dips down to cross numerous creeks and draws, there are steep pitches; a 40% grade is the steepest. About half way there, the trail crosses an old logging road (GPS Point 3), which provides a view of the old growth "Cedar Grove" across the valley. The trail then climbs steadily up and around the mountainside (GPS Point 4), as it enters the small Kimbol Lake valley, where it again levels off. A watchful eye on the steep trail sections will help avoid their exposed tree roots and loose rocks.

Resting the hill and entering the Kimbol Lake valley, the relationship between geography and biology is profound, as here the flatter, moister land hosts magnificent trees and a rich undergrowth layer (GPS Point 5). Devil's club thrives due to the underground drainage from Kimbol Lake; rhododendron and huckleberries are abundant too. Excellent habitat for bears and other large mammals results from the plentiful berries and roots, ample drinking water and prime den sites amongst tree roots and the rockslide boulders.

The trail winds toward Kimbol Lake for the last half kilometre, accessing its western shore from the rocky talus slope (GPS Point 6). Here, some time for a rest, lunch or casting for small rainbow trout or mountain whitefish is in order. A walk around the lake will reveal an old trapper's cabin at the southeastern end of the lake. Wilson Lake Road previously provided road access to the cabin but is now washed out. After enjoying the scenery, the quick walk back to the Hot Springs leads to a relaxing and well-deserved soak.

Access

To access Kimbol Lake Trail, drive north from Nakusp on Highway 23, toward Revelstoke. About 2 km from town, turn right onto Hot Springs Road, and follow the road for 12 kilometres to the Nakusp Hot Springs. Park here, and follow the wide trail leading from the northeastern end of the parking lot (GPS **P**); the trail crosses the suspension bridge over Kuskanax Creek and forks a hundred metres further along. Take the left fork, which leads to the hot springs source and the brown wooden Kimbol Lake trail marker.

Modes of Use

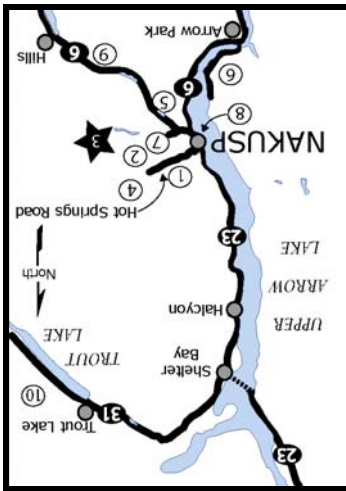
Because of its steep pitches (up to 40%) and occasional muddy patches, Kimbol Lake trail is primarily traveled on foot. The trail is in good shape, and biking it is possible for the more extreme enthusiast.

Past and Future

The Kimbol Lake trail was established by the Ministry of Forests as a recreation trail. The lake was stocked periodically with Rainbow trout until 1987. The cabin at the far end of the lake attests to the lake and surrounding area's historical use for hunting and trapping.

If You Liked This Trail

For more spring and fall hiking and biking, try Nakusp Hot Springs trail, Wensley Creek or portions of Rosebery Railway Trail. Nearby ascents include Kuskanax Mountain and Saddle Mountain Lookout trails.



- Trails in Series:**
- ① Kuskanaux Mtn.
 - ② Hotsprings Trail
 - ★ Kimbol Lake
 - ④ Cedar Grove
 - ⑤ Box Lake Loop
 - ⑥ Saddle Lookout
 - ⑦ Wensley Creek
 - ⑧ Nakusp Loop
 - ⑨ Rosebery Railway
 - ⑩ Silver Cup Ridge



General Information
 Be prepared for hiking. Even if your journey is a short one, you should have:

- solid walking shoes or boots
- water and nutritious food
- first aid supplies
- comfortable clothing – loose layers with rain gear

In the backcountry, prepare for the unexpected:

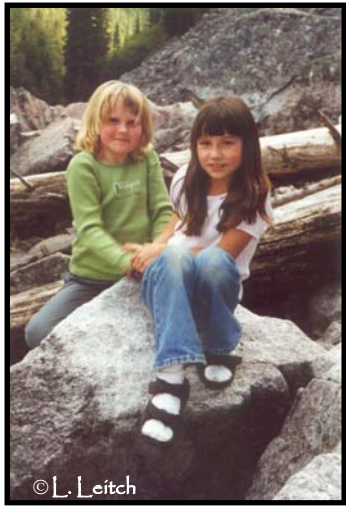
- tell someone where you are going and when you expect to return
- bring emergency supplies eg. warm clothes, extra food & water, matches, knife, compass, map
- make noise to alert wildlife to your presence eg. sing, whistle, clap

Trails are shared by many and maintained by few, so follow trail etiquette:

- keep to the designated trails
- take only pictures; leave only footprints
- foot traffic yields to horses, bikes and motorized traffic (only use on trails allowing motors)
- travel in pairs or groups, and keep kids in sight at all times
- keep pets under control; be aware they may pose a hazard with backcountry wildlife

~ Detailed information on the inside ~

This brochure is informational only. Trail users assume all responsibility for personal injury or damage to equipment.



© L. Leitch
 Young hikers at play

Ridge Environmental Services & Kootenay Virtual Tours, who jointly retain copyright. Project funding came from a 2003 Columbia Basin Trust Community Initiatives Grant. Many thanks to True North Forestry Consulting Ltd., Pope & Talbot Ltd., Slocan Forest Products and the Ministry of Forests for their various contributions to the project.

* All brochures in the Trails of Nakusp series are available online at : www.nakusparrowlakes.com

For more information:
www.nakusphotosprings.com
www.for.gov.bc.ca
www.bcrockies.com
www.hellobc.com/bcescapes/regions/bcrockies.asp
wlapwww.gov.bc.ca/bcparks/recreation.htm

Credits:
 The Trails of Nakusp brochure series was produced for the Nakusp & District Chamber of Commerce, by Hailstorm

Nakusp & District Chamber of Commerce and Visitor Centre, 92 - 6th Ave NW
 Box 387, Nakusp, BC V0G 1R0
nakusp@telus.net

Trails of Nakusp
Day Hikes
 Spring~Summer~Fall

Kimbol Lake Trail

© L. Leitch

The gang rests for a snack on the shores of Kimbol Lake.